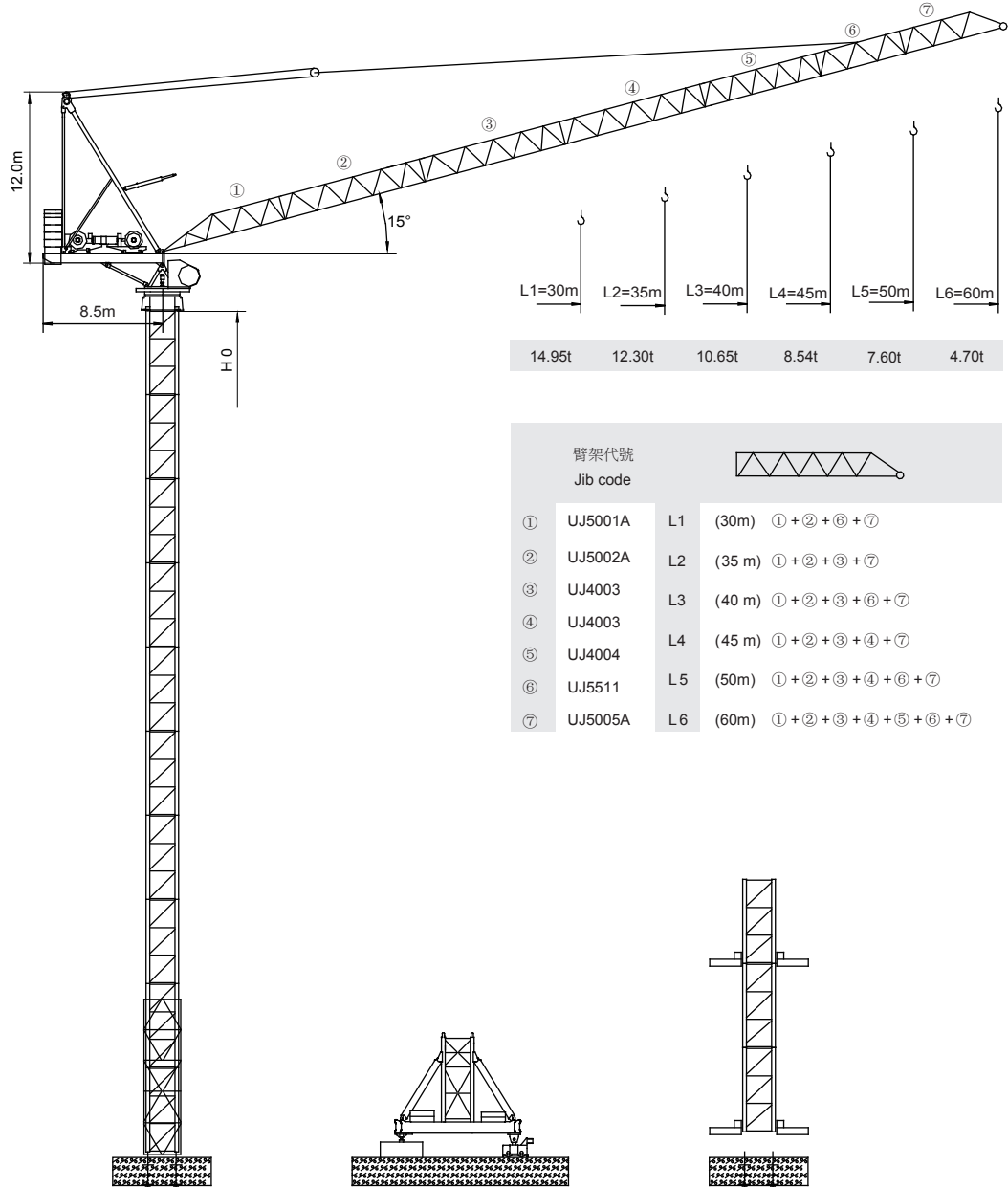


# 永茂建机 YONGMAO

# STL420A 25t



| 臂架代號<br>Jib code |         |                        |
|------------------|---------|------------------------|
| ①                | UJ5001A | L1 (30m) ①+②+⑥+⑦       |
| ②                | UJ5002A | L2 (35m) ①+②+③+⑦       |
| ③                | UJ4003  | L3 (40m) ①+②+③+⑥+⑦     |
| ④                | UJ4003  | L4 (45m) ①+②+③+④+⑦     |
| ⑤                | UJ4004  | L5 (50m) ①+②+③+④+⑥+⑦   |
| ⑥                | UJ5511  | L5 (50m) ①+②+③+④+⑥+⑦   |
| ⑦                | UJ5005A | L6 (60m) ①+②+③+④+⑤+⑥+⑦ |



Luffing

V5.0-09112014

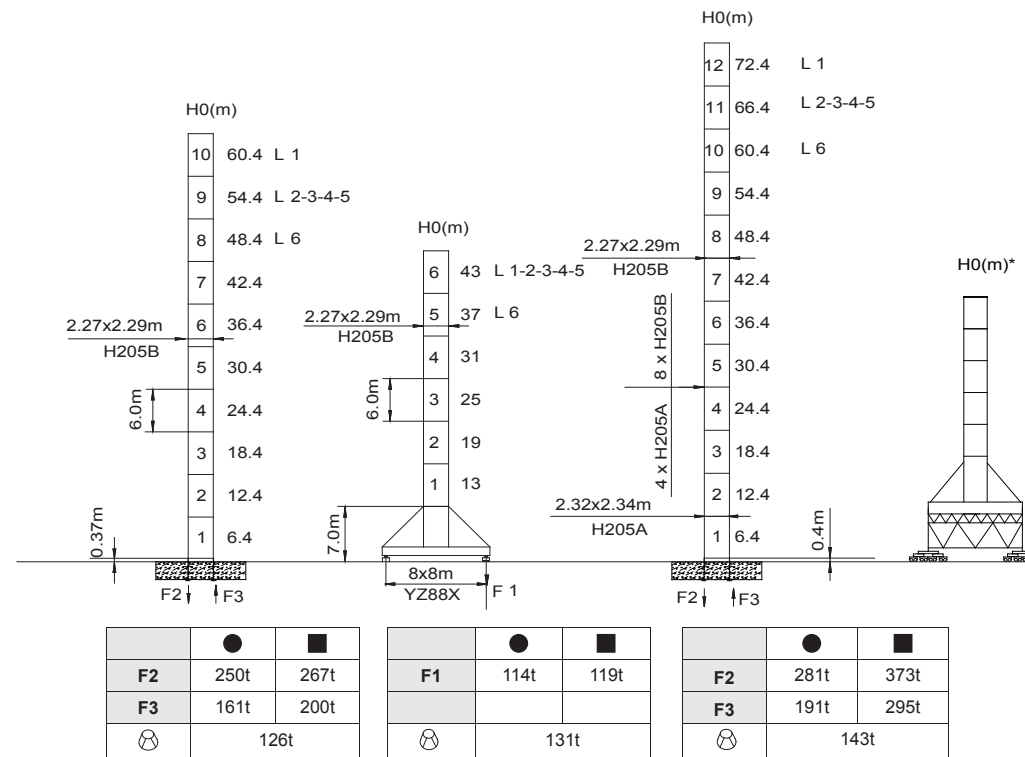
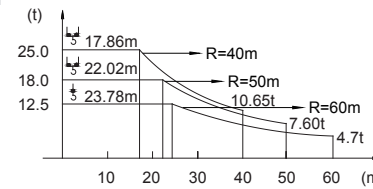
# 動臂系列

# STL420A 25t

載荷表 Load Chart

U-25-A(B)-1-V1.0

| R (m) | 倍率 Fall | R(C max) (m) | C max (t) | 20    | 22    | 24    | 26    | 28    | 30    | 35    | 40    | 45   | 50   | 55   | 60   |
|-------|---------|--------------|-----------|-------|-------|-------|-------|-------|-------|-------|-------|------|------|------|------|
| 60    | ↓       | 5.73~23.78   | 12.50     | 12.50 | 12.50 | 12.38 | 11.40 | 10.55 | 9.82  | 8.36  | 7.26  | 6.41 | 5.72 | 5.17 | 4.70 |
| 50    | ↓       | 4.85~31.67   | 12.50     | 12.50 | 12.50 | 12.50 | 12.50 | 12.50 | 12.50 | 11.23 | 9.72  | 8.54 | 7.60 |      |      |
|       | ↘       | 4.85~22.02   | 18.00     | 18.00 | 18.00 | 16.47 | 15.16 | 14.03 | 13.06 | 11.11 | 9.65  | 8.51 | 7.60 |      |      |
| 45    | ↓       | 4.38~31.67   | 12.50     | 12.50 | 12.50 | 12.50 | 12.50 | 12.50 | 12.50 | 11.23 | 9.72  | 8.54 |      |      |      |
|       | ↘       | 4.38~22.10   | 18.00     | 18.00 | 18.00 | 16.53 | 15.21 | 14.08 | 13.10 | 11.15 | 9.68  | 8.54 |      |      |      |
| 40    | ↓       | 3.93~34.28   | 12.50     | 12.50 | 12.50 | 12.50 | 12.50 | 12.50 | 12.50 | 12.23 | 10.65 |      |      |      |      |
|       | ↘       | 3.93~17.86   | 25.00     | 22.23 | 20.12 | 18.37 | 16.88 | 15.61 | 14.51 | 12.30 | 10.65 |      |      |      |      |
| 35    | ↓       | 3.48~34.47   | 12.50     | 12.50 | 12.50 | 12.50 | 12.50 | 12.50 | 12.50 | 12.30 |       |      |      |      |      |
|       | ↘       | 3.48~17.86   | 25.00     | 22.23 | 20.12 | 18.37 | 16.88 | 15.61 | 14.51 | 12.30 |       |      |      |      |      |
| 30    | ↓       | 3.03~30.00   | 12.50     | 12.50 | 12.50 | 12.50 | 12.50 | 12.50 | 12.50 | 12.50 |       |      |      |      |      |
|       | ↘       | 3.03~18.30   | 25.00     | 22.81 | 20.66 | 18.88 | 17.37 | 16.07 | 14.95 |       |       |      |      |      |      |



● 工作狀態支反力 In service reaction    ■ 非工作狀態支反力 Out of service reaction  
 ⊕ 整機自由高度重量 (不含平衡重及壓重重量) Total weight of free standing crane (excludes counter weight & ballast.)

Luffing STL420A

1 1  
7 7  
7 8

Luffing STL420A  
Luffing STL420A

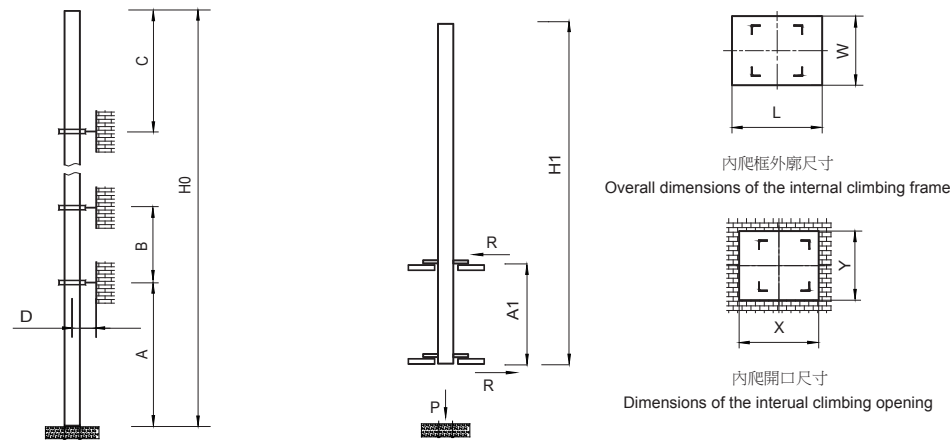


YONGMAO HOLDINGS LIMITED



YONGMAO HOLDINGS LIMITED

# STL420A 25t



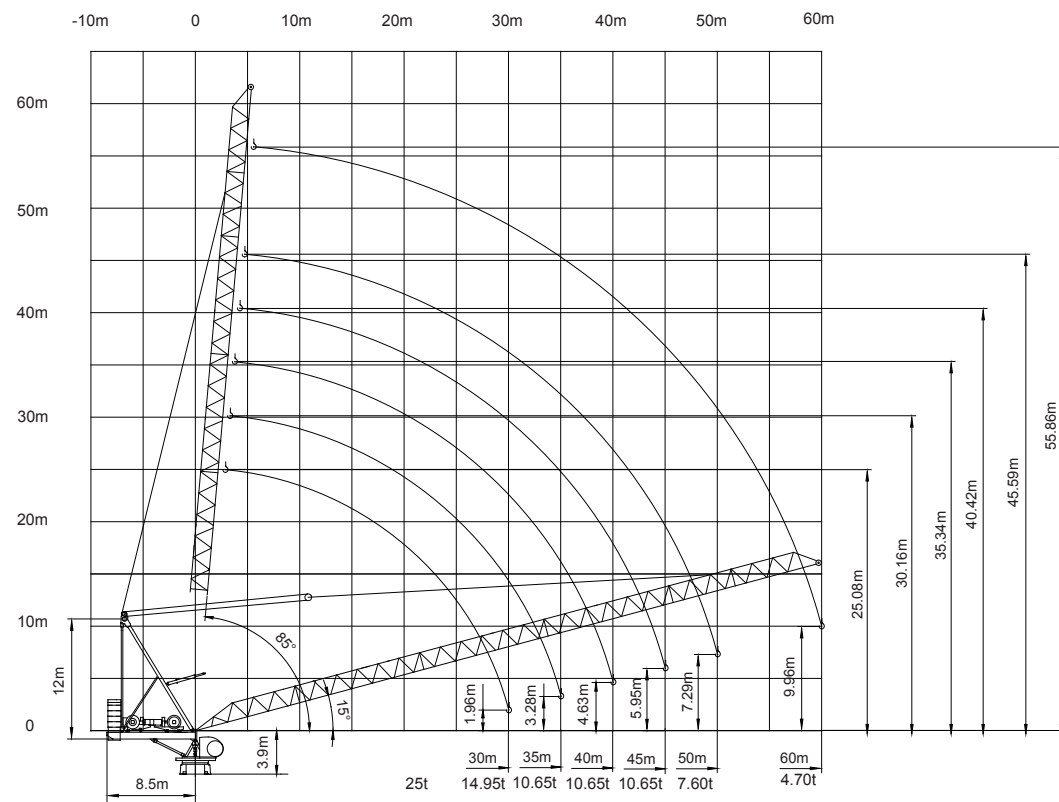
| 塔身節 Mast | 臂長 Jib length | A (m) | B (m) | C (m) | D (m) | H0 (m)       |
|----------|---------------|-------|-------|-------|-------|--------------|
| H205B    | L1            | 30/48 | 24/32 | 32    | >4    | 400<br>>400* |
|          | L2-3-4-5      | 30/42 | 24/30 | 30    |       |              |
|          | L6            | 30/36 | 24/28 | 28    |       |              |

| 塔身節 Mast | 臂長 Jib length | H1 (m) | A1 (m) | P (t) | R (t) | X (m) | Y (m) | L (m) | W (m) |
|----------|---------------|--------|--------|-------|-------|-------|-------|-------|-------|
| H205B    | L1            | 60     | 18     | 160   | 34    | 3.28  | 2.40  | 3.50  | 3.02  |
|          | L2-3-4-5      | 48     |        | 158   | 32    |       |       |       |       |
|          | L6            | 42     |        | 154   | 31    |       |       |       |       |

附著道數 Number of tie collars=(H0-A-C)/B+1

超過100m高度，需降低載荷，請與公司聯繫。

Load should be reduced when the height exceeds 100m. Please contact Yongmao for details.



1 1  
7 8  
9 0

# STL420A 25t

主要性能參數 Specifications

| 機構 Mechanism | ●                |      | ●●    |           | 電動機 Motor kW   |
|--------------|------------------|------|-------|-----------|----------------|
|              | m/min            | t    | m/min | t         |                |
| 160LFV125DB  | 0-64             | 12.5 | 0-32  | 25.0      | 900m<br>>900m* |
|              | 0-76             | 10.0 | 0-38  | 20.0      |                |
|              | 0-128            | 4.0  | 0-64  | 8.0       |                |
| 90DFV60B     | 15° - 85° 3.0min |      |       | 90        |                |
| RTC290       | 0 - 0.8 rpm      |      |       | 2x145 N·m |                |
| RT           | 12.5 - 25 m/min  |      |       | 4x2.6/5.2 |                |

| 供電容量 Power supply   | kVA |
|---------------------|-----|
| 380V ( ± 10%) 50 Hz | 300 |

\* 與製造商聯繫 Contact us, please.

☆ 标准配置 Standard configuration.

本技術參數不受法律約束，技術資訊請詳見相應說明書。

These specifications and data are not legally binding. For any technical information, please refer to corresponding instructions.



YONGMAO HOLDINGS LIMITED



YONGMAO HOLDINGS LIMITED

Luffing STL420A  
Luffing STL420A