

Top77ess

V 5.1-08102015

平頭系列

0 0
2 2
3 4

Topless STT373

Topless STT373

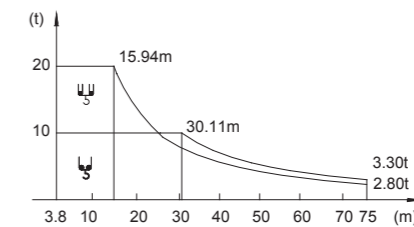
載荷表 Load Chart

20t

雙小車 2-trolley

STAC-20-A(B)-4-V1.0

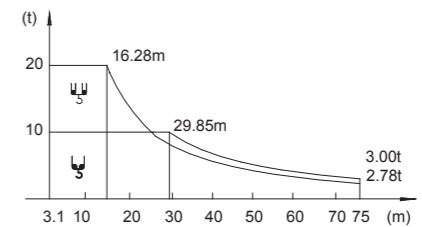
R (m)	倍率 Fall	R (C _{max}) (m)	C _{max} (t)	30	35	40	45	50	55	60	65	70	75
75	U	15.94	20.00	9.54	7.91	6.70	5.76	5.02	4.41	3.90	3.48	3.11	2.80
	L	30.11	10.00	10.00	8.41	7.20	6.26	5.52	4.91	4.40	3.98	3.61	3.30
70	U	16.15	20.00	9.70	8.04	6.81	5.86	5.11	4.49	3.98	3.55	3.18	
	L	30.52	10.00	10.00	8.54	7.31	6.36	5.61	4.99	4.48	4.05	3.68	
65	U	17.79	20.00	10.92	9.08	7.72	6.67	5.83	5.15	4.58	4.10		
	L	33.71	10.00	10.00	9.58	8.22	7.17	6.33	5.65	5.08	4.60		
60	U	18.12	20.00	11.16	9.29	7.90	6.83	5.97	5.28	4.70			
	L	34.36	10.00	10.00	9.79	8.40	7.33	6.47	5.78	5.20			
55	U	19.93	20.00	12.51	10.44	8.90	7.72	6.77	6.00				
	L	37.89	10.00	10.00	10.00	9.40	8.22	7.27	6.50				
50	U	20.34	20.00	12.81	10.70	9.13	7.92	6.95					
	L	38.69	10.00	10.00	10.00	9.63	8.42	7.45					
45	U	21.33	20.00	13.55	11.33	9.68	8.40						
	L	40.62	10.00	10.00	10.00	10.00	8.90						
40	U	21.37	20.00	13.49	11.31	9.70							
	L	40.00	10.00	10.00	10.00	10.00							
35	U	21.40	20.00	13.55	11.37								
	L	35.00	10.00	10.00	10.00								
30	U	21.42	20.00	13.62									
	L	30.00	10.00	10.00									



單小車 1-trolley

STAC-20-A(B)-5-V1.0

R (m)	倍率 Fall	R (C _{max}) (m)	C _{max} (t)	30	35	40	45	50	55	60	65	70	75
75	U	16.28	20.00	9.72	8.04	6.79	5.83	5.06	4.44	3.92	3.48	3.10	2.78
	L	29.85	10.00	9.94	8.26	7.01	6.05	5.28	4.66	4.14	3.70	3.32	3.00
70	U	16.46	20.00	9.85	8.15	6.89	5.92	5.14	4.51	3.98	3.54	3.16	
	L	30.19	10.00	10.00	8.37	7.11	6.14	5.36	4.73	4.20	3.76	3.38	
65	U	18.05	20.00	11.05	9.17	7.78	6.70	5.85	5.15	4.57	4.08		
	L	33.21	10.00	10.00	9.39	8.00	6.92	6.07	5.37	4.79	4.30		
60	U	18.35	20.00	11.28	9.37	7.95	6.85	5.98	5.27	4.68			
	L	33.78	10.00	10.00	9.59	8.17	7.07	6.20	5.49	4.90			
55	U	20.12	20.00	12.60	10.50	8.93	7.72	6.76	5.98				
	L	37.12	10.00	10.00	10.00	9.15	7.94	6.98	6.20				
50	U	20.50	20.00	12.88	10.74	9.14	7.91	6.93					
	L	37.83	10.00	10.00	10.00	9.36	8.13	7.15					
45	U	21.45	20.00	13.60	11.34	9.67	8.38						
	L	39.63	10.00	10.00	10.00	9.89	8.60						
40	U	21.46	20.00	13.61	11.35	9.68							
	L	39.66	10.00	10.00	10.00	9.90							
35	U	21.46	20.00	13.60	11.35								
	L	35.00	10.00	10.00	10.00								
30	U	21.46	20.00	13.60									
	L	30.00	10.00	10.00									



Topless STT373



YONGMAO HOLDINGS LIMITED

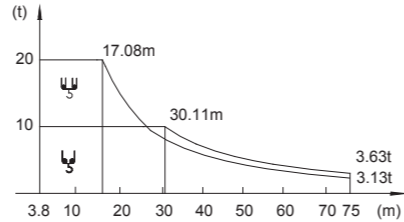


YONGMAO HOLDINGS LIMITED

STT373-T1

20/18t

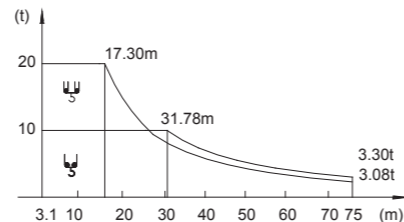
20t 雙小車 2-trolley LIFTPLUS (+10%) STAC-20-A(B)-6-V1.0													
R (m)	倍率 Fall	R(C _{max}) (m)	C _{max} (t)	30	35	40	45	50	55	60	65	70	75
75	UU JJ	17.08 32.32	20.00 10.00	10.39 10.00	8.63 9.13	7.32 7.82	6.32 6.82	5.51 6.01	4.86 5.36	4.32 4.82	3.86 4.36	3.47 3.97	3.13 3.63
70	UU JJ	17.33 32.82	20.00 10.00	10.58 10.00	8.79 9.29	7.47 7.97	6.44 6.94	5.63 6.13	4.96 5.46	4.41 4.91	3.95 4.45	3.55 4.05	
65	UU JJ	19.16 36.38	20.00 10.00	11.93 10.00	9.95 10.00	8.47 8.97	7.33 7.83	6.43 6.93	5.69 6.19	5.08 5.58	4.56 5.06		
60	UU JJ	19.55 37.14	20.00 10.00	12.22 10.00	10.20 10.00	8.69 9.19	7.53 8.03	6.60 7.10	5.85 6.35	5.22 5.72			
55	UU JJ	21.56 41.07	20.00 10.00	13.72 10.00	11.47 10.00	9.80 10.00	8.51 9.01	7.49 7.99	6.65 7.15				
50	UU JJ	22.03 42.00	20.00 10.00	14.07 10.00	11.77 10.00	10.07 10.00	8.75 9.25	7.70 8.20					
45	UU JJ	23.15 44.16	20.00 10.00	14.90 10.00	12.48 10.00	10.68 10.00	9.29 9.79						
40	UU JJ	23.15 40.00	20.00 10.00	14.80 10.00	12.44 10.00	10.68 10.00							
35	UU JJ	23.08 35.00	20.00 10.00	14.81 10.00	12.44 10.00								
30	UU JJ	23.01 30.00	20.00 10.00	14.80 10.00									



以上的吊載僅可以在低起升速度使用。若需要詳情，請參考說明書或與我們聯繫。

The above load chart achieve with slow hoisting speed. Please refer to our manual or contact us for more details.

單小車 1-trolley LIFTPLUS (+10%) STAC-20-A(B)-7-V1.0													
R (m)	倍率 Fall	R(C _{max}) (m)	C _{max} (t)	30	35	40	45	50	55	60	65	70	75
75	UU JJ	17.30 31.78	20.00 10.00	10.49 10.00	8.69 8.91	7.36 7.58	6.33 6.55	5.51 5.73	4.85 5.07	4.29 4.51	3.83 4.05	3.43 3.65	3.08 3.30
70	UU JJ	17.53 32.22	20.00 10.00	10.66 10.00	8.84 9.06	7.49 7.71	6.45 6.67	5.62 5.84	4.94 5.16	4.38 4.60	3.90 4.12	3.50 3.72	
65	UU JJ	19.32 35.60	20.00 10.00	12.00 10.00	9.98 10.00	8.49 8.71	7.33 7.55	6.41 6.63	5.66 5.88	5.04 5.26	4.51 4.73		
60	UU JJ	19.69 36.30	20.00 10.00	12.27 10.00	10.22 10.00	8.69 8.91	7.51 7.73	6.57 6.79	5.81 6.03	5.17 5.39			
55	UU JJ	21.66 40.04	20.00 10.00	13.75 10.00	11.48 10.00	9.79 10.00	8.49 8.71	7.45 7.67	6.60 6.82				
50	UU JJ	22.11 40.88	20.00 10.00	14.09 10.00	11.77 10.00	10.04 10.00	8.71 8.93	7.65 7.87					
45	UU JJ	23.19 42.93	20.00 10.00	14.90 10.00	12.46 10.00	10.64 10.00	9.24 9.46						
40	UU JJ	23.19 40.00	20.00 10.00	14.90 10.00	12.46 10.00	10.64 10.00							
35	UU JJ	23.18 35.00	20.00 10.00	14.89 10.00	12.45 10.00								
30	UU JJ	23.18 30.00	20.00 10.00	14.89 10.00									



以上的吊載僅可以在低起升速度使用。若需要詳情，請參考說明書或與我們聯繫。

The above load chart achieve with slow hoisting speed. Please refer to our manual or contact us for more details.

Topless STT373

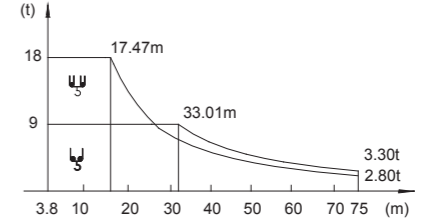


YONGMAO HOLDINGS LIMITED

STT373-T1

20/18t

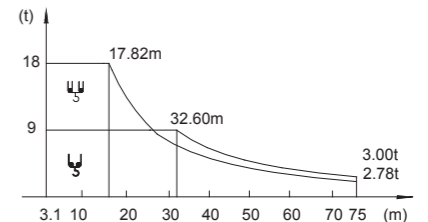
18t 雙小車 2-trolley STAC-18-A(B)-4-V1.0													
R (m)	倍率 Fall	R(C _{max}) (m)	C _{max} (t)	30	35	40	45	50	55	60	65	70	75
75	UU JJ	17.47 33.01	18.00 9.00	9.54 9.00	7.91 8.41	6.70 7.20	5.76 6.26	5.02 5.52	4.41 4.91	3.90 4.40	3.48 3.98	3.11 3.61	2.80 3.30
70	UU JJ	17.70 33.46	18.00 9.00	9.70 9.00	8.04 8.54	6.81 7.31	5.86 6.36	5.11 5.61	4.49 4.99	3.98 4.48	3.55 4.05	3.18 3.68	
65	UU JJ	19.50 36.97	18.00 9.00	10.92 9.00	9.08 9.00	7.72 8.22	6.67 7.17	5.83 6.33	5.15 5.65	4.58 5.08	4.10 4.60		
60	UU JJ	19.87 37.68	18.00 9.00	11.16 9.00	9.29 9.00	7.90 8.40	6.83 7.33	5.97 6.47	5.28 5.78	4.70 5.20			
55	UU JJ	21.86 41.56	18.00 9.00	12.51 9.00	10.44 9.00	8.90 9.00	7.72 8.22	6.77 7.27	6.00 6.50				
50	UU JJ	22.32 42.44	18.00 9.00	12.81 9.00	10.70 9.00	9.13 9.00	7.92 8.42	6.95 7.45					
45	UU JJ	23.41 44.56	18.00 9.00	13.55 9.00	11.33 9.00	9.68 9.00	8.40 8.90						
40	UU JJ	23.45 40.00	18.00 9.00	13.49 9.00	11.31 9.00	9.70 9.00							
35	UU JJ	23.48 35.00	18.00 9.00	13.55 9.00	11.37 9.00								
30	UU JJ	23.51 30.00	18.00 9.00	13.62 9.00									



以上的吊載僅可以在低起升速度使用。若需要詳情，請參考說明書或與我們聯繫。

The above load chart achieve with slow hoisting speed. Please refer to our manual or contact us for more details.

單小車 1-trolley STAC-18-A(B)-5-V1.0													
R (m)	倍率 Fall	R(C _{max}) (m)	C _{max} (t)	30	35	40	45	50	55	60	65	70	75
75	UU JJ	17.82 32.60	18.00 9.00	9.72 9.00	8.04 8.26	6.79 7.01	5.83 6.05	5.06 5.28	4.44 4.66	3.92 4.14	3.48 3.70	3.10 3.32	2.78 3.00
70	UU JJ	18.02 32.97	18.00 9.00	9.85 9.00	8.15 8.37	6.89 7.11	5.92 6.14	5.14 5.36	4.51 4.73	3.98 4.20	3.54 3.76	3.16 3.38	
65	UU JJ	19.78 36.28	18.00 9.00	11.05 9.00	9.17 9.00	7.78 8.00	6.70 6.92	5.85 6.07	5.15 5.37	4.57 4.79	4.08 4.30		
60	UU JJ	20.11 36.90	18.00 9.00	11.28 9.00	9.37 9.00	7.95 8.17	6.85 7.07	5.98 6.20	5.27 5.49	4.68 4.90			
55	UU JJ	22.06 40.57	18.00 9.00	12.60 9.00	10.50 9.00	8.93 9.00	7.72 7.94	6.76 6.98	5.98 6.20				
50	UU JJ	22.47 41.35	18.00 9.00	12.88 9.00	10.74 9.00	9.14 9.00	7.91 8.13	6.93 7.15					
45	UU JJ	23.52 43.32	18.00 9.00	13.60 9.00	11.34 9.00	9.67 9.00	8.38 8.60						
40	UU JJ	23.54 40.00	18.00 9.00	13.61 9.00	11.35 9.00	9.68 9.00							
35	UU JJ	23.53 35.00	18.00 9.00	13.60 9.00	11.35 9.00								
30	UU JJ	23.53 30.00	18.00 9.00	13.60 9.00									



以上的吊載僅可以在低起升速度使用。若需要詳情，請參考說明書或與我們聯繫。

The above load chart achieve with slow hoisting speed. Please refer to our manual or contact us for more details.

Topless STT373



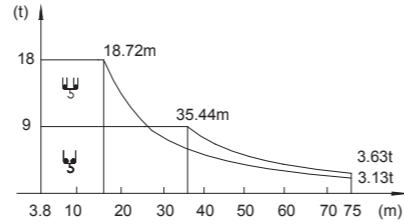
YONGMAO HOLDINGS LIMITED

STT373-T1 20/18t

18t

雙小車 2-trolley LIFTPLUS (+10%) STAC-18-A(B)-6-V1.0

R (m)	倍率 Fall	R(C _{max}) (m)	C _{max} (t)	30	35	40	45	50	55	60	65	70	75
75	UU	18.72	18.00	10.39	8.63	7.32	6.32	5.51	4.86	4.32	3.86	3.47	3.13
	UJ	35.44	9.00	9.00	9.00	7.82	6.82	6.01	5.36	4.82	4.36	3.97	3.63
70	UU	19.00	18.00	10.58	8.79	7.47	6.44	5.63	4.96	4.41	3.95	3.55	
	UJ	35.99	9.00	9.00	9.00	7.97	6.94	6.13	5.46	4.91	4.45	4.05	
65	UU	21.01	18.00	11.93	9.95	8.47	7.33	6.43	5.69	5.08	4.56		
	UJ	39.90	9.00	9.00	9.00	8.97	7.83	6.93	6.19	5.58	5.06		
60	UU	21.44	18.00	12.22	10.20	8.69	7.53	6.60	5.85	5.22			
	UJ	40.74	9.00	9.00	9.00	9.00	8.03	7.10	6.35	5.72			
55	UU	23.66	18.00	13.72	11.47	9.80	8.51	7.49	6.65				
	UJ	45.06	9.00	9.00	9.00	9.00	9.00	9.00	9.00	7.99	7.15		
50	UU	24.18	18.00	14.07	11.77	10.07	8.75	7.70					
	UJ	46.07	9.00	9.00	9.00	9.00	9.00	9.00	8.00				
45	UU	25.41	18.00	14.90	12.48	10.68	9.29						
	UJ	45.00	9.00	9.00	9.00	9.00	9.00						
40	UU	25.41	18.00	14.80	12.44	10.68							
	UJ	40.00	9.00	9.00	9.00	9.00							
35	UU	25.34	18.00	14.81	12.44								
	UJ	35.00	9.00	9.00	9.00								
30	UU	25.26	18.00	14.80									
	UJ	30.00	9.00	9.00									

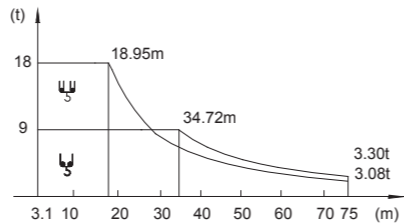


以上的吊載僅可以在低起升速度使用。若需要詳情，請參考說明書或與我們聯繫。

The above load chart achieve with slow hoisting speed. Please refer to our manual or contact us for more details.

單小車 1-trolley LIFTPLUS (+10%) STAC-18-A(B)-7-V1.0

R (m)	倍率 Fall	R(C _{max}) (m)	C _{max} (t)	30	35	40	45	50	55	60	65	70	75
75	UU	18.95	18.00	10.49	8.69	7.36	6.33	5.51	4.85	4.29	3.83	3.43	3.08
	UJ	34.72	9.00	9.00	8.91	7.58	6.55	5.73	5.07	4.51	4.05	3.65	3.30
70	UU	19.20	18.00	10.66	8.84	7.49	6.45	5.62	4.94	4.38	3.90	3.50	
	UJ	35.20	9.00	9.00	9.00	7.71	6.67	5.84	5.16	4.60	4.12	3.72	
65	UU	21.18	18.00	12.00	9.98	8.49	7.33	6.41	5.66	5.04	4.51		
	UJ	38.91	9.00	9.00	9.00	8.71	7.55	6.63	5.88	5.26	4.73		
60	UU	21.58	18.00	12.27	10.22	8.69	7.51	6.57	5.81	5.17			
	UJ	39.66	9.00	9.00	9.00	8.91	7.73	6.79	6.03	5.39			
55	UU	23.76	18.00	13.75	11.48	9.79	8.49	7.45	6.60				
	UJ	43.76	9.00	9.00	9.00	9.00	8.71	7.67	6.82				
50	UU	24.25	18.00	14.09	11.77	10.04	8.71	7.65					
	UJ	44.69	9.00	9.00	9.00	9.00	8.93	7.87					
45	UU	25.44	18.00	14.90	12.46	10.64	9.24						
	UJ	45.00	9.00	9.00	9.00	9.00	9.00						
40	UU	25.44	18.00	14.90	12.46	10.64							
	UJ	40.00	9.00	9.00	9.00	9.00							
35	UU	25.43	18.00	14.89	12.45								
	UJ	35.00	9.00	9.00	9.00								
30	UU	25.43	18.00	14.89									
	UJ	30.00	9.00	9.00									



以上的吊載僅可以在低起升速度使用。若需要詳情，請參考說明書或與我們聯繫。

The above load chart achieve with slow hoisting speed. Please refer to our manual or contact us for more details.

Topless STT373



YONGMAO HOLDINGS LIMITED

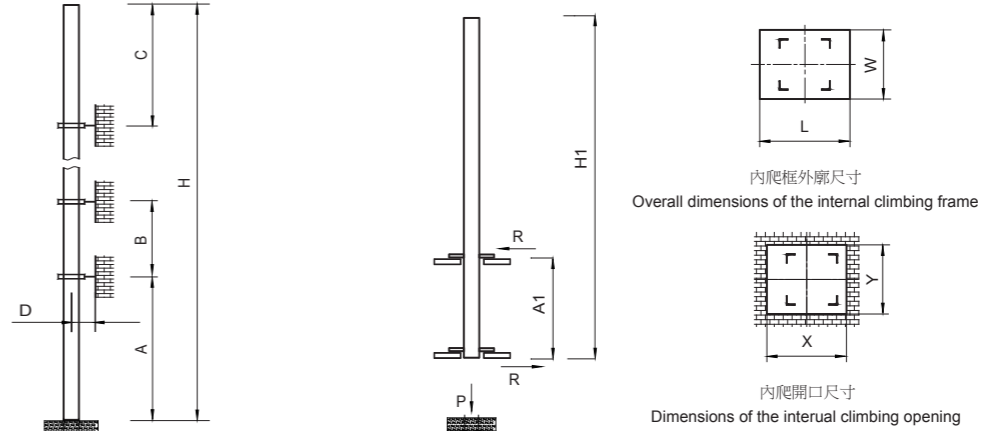
平頭系列

STT373-T1 20/18t

H(m)	17	16	15	14	13	12	11	10	9	8	7	6	5	4	3	2	1
	51.5	48.5	45.5	42.5	39.5	36.5	33.5	30.5	27.5	24.5	21.5	18.5	15.5	12.5	9.5	6.5	3.5
	75m~70m	65m~60m	55m~30m														

H(m)	13	12	11	10	9	8	7	6	5	4	3	2	1
	78.6	72.6	66.6	60.6	54.6	48.6	42.6	36.6	30.6	24.6	18.6	12.6	6.6

● 工作狀態支反力 In service reaction ■ 非工作狀態支反力 Out of service reaction
 ⊗ 整機自由高度重量 (不含平衡重及壓重重量) Total weight of free standing crane (excludes counter weight & ballast.)



塔身節 Mast	臂長 Jib length	A (m)	B (m)	C (m)	D (m)	H (m)
H205B	75m~30m	63	42	57.6	>4.0	400 >400 *
L69B1	75m~70m	40.5	27	38	>3.6	350 >350 *
	65m~60m	37.5	24	35	>3.6	350 >350 *
	55m~30m	34.5	18	29	>3.6	350 >350 *

塔身節 Mast	H1 (m)	A1 (m)	P (t)	R (t)	X (m)	Y (m)	L (m)	W (m)
H205B	*	*	*	*	*	*	*	*
L69B1	*	*	*	*	*	*	*	*

附著道數 Number of tie collars = (H-A-C)/B+1

超過100m高度，需降低載荷，請與公司聯繫。 Load should be reduced when the height exceeds 100m. Please contact Yongmao for details.

Topless STT373



YONGMAO HOLDINGS LIMITED

Topless STT373
Topless STT373

STT373-T1

20/18t

主要性能參數 Specifications

機構 Mechanism							電動機 Motor kW	
		m/min	t	m/min	t			
	20t	75LFV50DB1 [☆]	0-32 0-96 0-150	10.0 3.0 1.0	0-16 0-48 0-75	20.0 6.0 2.0	1030m >1030m [*]	75
		90LFV50	0-37 0-44 0-75	10.0 8.0 3.0	0-18 0-22 0-37	20.0 16.0 6.0	550m >550m [*]	90
	18t	75LFV45 [☆]	0-38 0-46 0-76	9.0 6.0 3.0	0-19 0-23 0-38	18.0 12.0 6.0	680m >680m [*]	75
		75LFV45DB1	0-40 0-96 0-160	9.0 3.0 1.0	0-20 0-48 0-80	18.0 6.0 2.0	1030m >1030m [*]	75
	11DFV10	0-65 m/min					11	
	7.5RFCV	0-0.6 rpm					3 x 145 N·m	
	RT	12.5 - 25.0 m/min					4x2.6/5.2	

供電容量 Power supply	kVA
380V (± 10%) 50 Hz	75LFV50DB1、75LFV45、75LFV45DB1 : 115 90LFV50 : 135

* 與製造商聯繫 Contact us, please.

☆ 標準配置 Standard configuration.

本技術參數不受法律約束，技術資訊請詳見相應說明書。
Specifications and data are not legally binding. For any technical information, please refer to corresponding instructions.

平頭系列

0 0
2 2
7 8

Topless STT373
Topless STT373

STT373-T1

20/18t



YONGMAO HOLDINGS LIMITED



YONGMAO HOLDINGS LIMITED