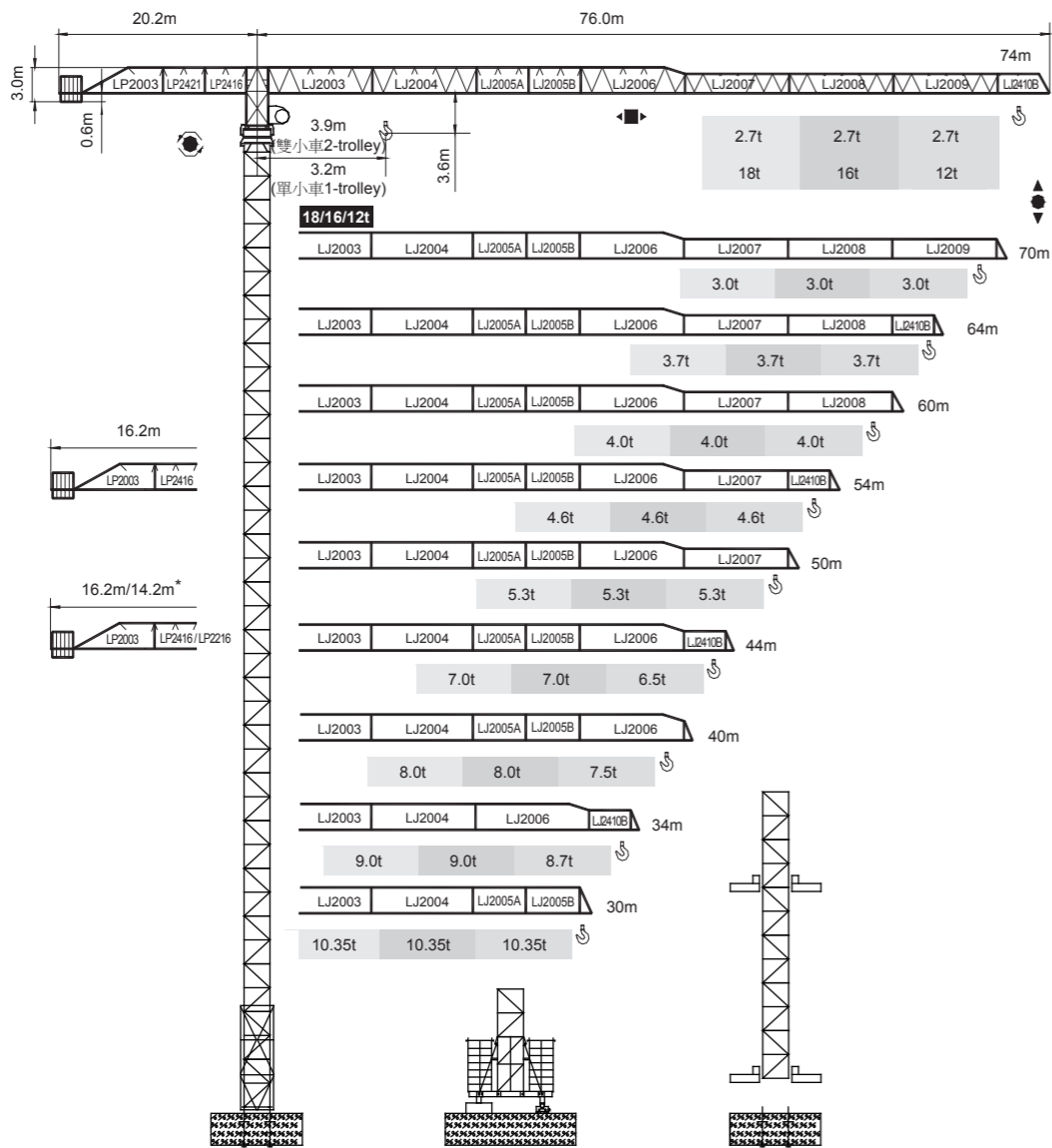


永茂建机  
YONGMAO

STT293  
18/16/12t



CE FEM

Topless

V 5.0-09112014



YONGMAO HOLDINGS LIMITED

平頭系列

0 0  
2 2  
3 4

Topless STT293  
Topless STT293

STT293  
18/16/12t

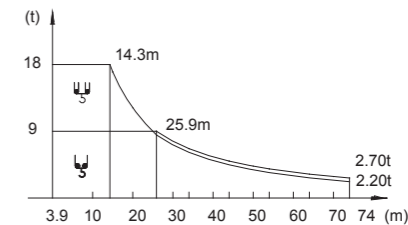
載荷表 Load Chart

18t

雙小車 2-trolley

L-18-A(B)-1-V1.0

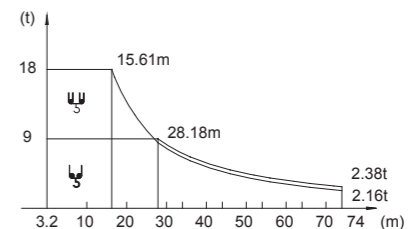
R (m)	倍率 Fall	R(C <sub>max</sub> ) (m)	C <sub>max</sub> (t)	30	34	40	44	50	54	60	64	70	74
74	雙	14.3	18.00	7.02	6.45	5.05	4.48	3.80	3.43	2.98	2.72	2.39	2.20
	單	25.9	9.00	7.66	6.65	5.55	4.98	4.30	3.93	3.48	3.22	2.89	2.70
70	雙	14.6	18.00	7.42	6.64	5.25	4.66	3.96	3.58	3.11	2.84	2.50	
	單	26.7	9.00	7.92	6.88	5.75	5.16	4.46	4.08	3.61	3.34	3.00	
64	雙	15.7	18.00	8.30	7.28	5.83	5.19	4.42	4.01	3.49	3.20		
	單	29.1	9.00	8.80	7.58	6.33	5.69	4.92	4.51	3.99	3.70		
60	雙	15.7	18.00	8.30	7.28	5.84	5.20	4.43	4.02	3.50			
	單	29.1	9.00	8.80	7.58	6.34	5.70	4.93	4.52	4.00			
54	雙	15.7	18.00	8.40	7.33	5.95	5.30	4.52	4.10				
	單	29.6	9.00	8.90	7.72	6.45	5.80	5.02	4.60				
50	雙	16.3	18.00	8.60	7.70	6.30	5.62	4.80					
	單	31.0	9.00	9.00	8.13	6.80	6.12	5.30					
44	雙	18.2	18.00	10.10	8.82	7.28	6.50						
	單	35.0	9.00	9.00	9.00	7.78	7.00						
40	雙	18.5	18.00	10.35	9.05	7.50							
	單	35.9	9.00	9.00	9.00	8.00							
34	雙	17.16	18.00	9.93	8.70								
	單	34.0	9.00	9.00	9.00								
30	雙	18.5	18.00	10.35									
	單	30.0	9.00	9.00									



單小車 1-trolley

L-18-A(B)-2-V1.0

R (m)	倍率 Fall	R(C <sub>max</sub> ) (m)	C <sub>max</sub> (t)	30	34	40	44	50	54	60	64	70	74
74	雙	15.61	18.00	8.12	6.88	5.58	4.88	4.08	3.64	3.09	2.78	2.39	2.16
	單	28.18	9.00	8.34	7.08	5.80	5.10	4.30	3.86	3.31	3.00	2.61	2.38
70	雙	15.85	18.00	8.29	7.03	5.71	5.01	4.18	3.74	3.18	2.86	2.46	
	單	28.65	9.00	8.51	7.23	5.93	5.23	4.40	3.96	3.40	3.08	2.68	
64	雙	16.79	18.00	8.94	7.59	6.19	5.45	4.56	4.09	3.49	3.16		
	單	30.43	9.00	9.00	7.80	6.41	5.67	4.78	4.31	3.71	3.38		
60	雙	16.69	18.00	8.90	7.53	6.14	5.40	4.53	4.05	3.46			
	單	30.25	9.00	9.00	7.74	6.36	5.62	4.75	4.27	3.68			
54	雙	16.70	18.00	8.91	7.54	6.24	5.51	4.54	4.06				
	單	30.53	9.00	9.00	7.75	6.46	5.73	4.76	4.28				
50	雙	17.25	18.00	9.28	7.87	6.43	5.67	4.76	4.28				
	單	31.33	9.00	9.00	8.08	6.65	5.89	4.98					
44	雙	18.95	18.00	10.45	8.89	7.30	6.46						
	單	34.54	9.00	9.00	9.00	7.52	6.68						
40	雙	19.25	18.00	10.66	9.07	7.46							
	單	35.12	9.00	9.00	9.00	7.68							
34	雙	18.52	18.00	10.07	8.70								
	單	34.00	9.00	9.00	9.00								
30	雙	19.18	18.00	10.61									
	單	30.00	9.00	9.00									



Topless STT293

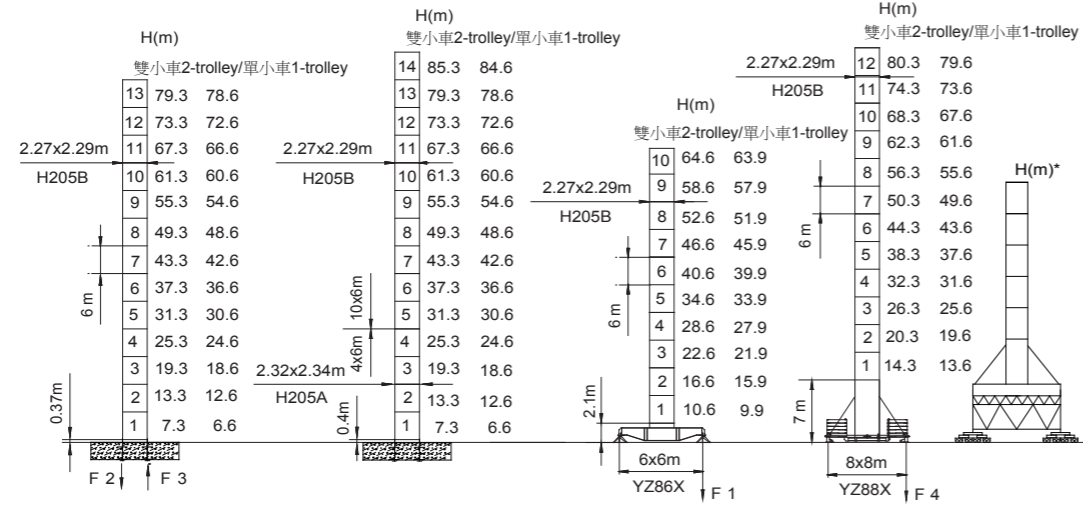


YONGMAO HOLDINGS LIMITED



# STT293

## 18/16/12t



<b>F2</b>	222t	341t	
<b>F3</b>	137t	271t	
	125t		

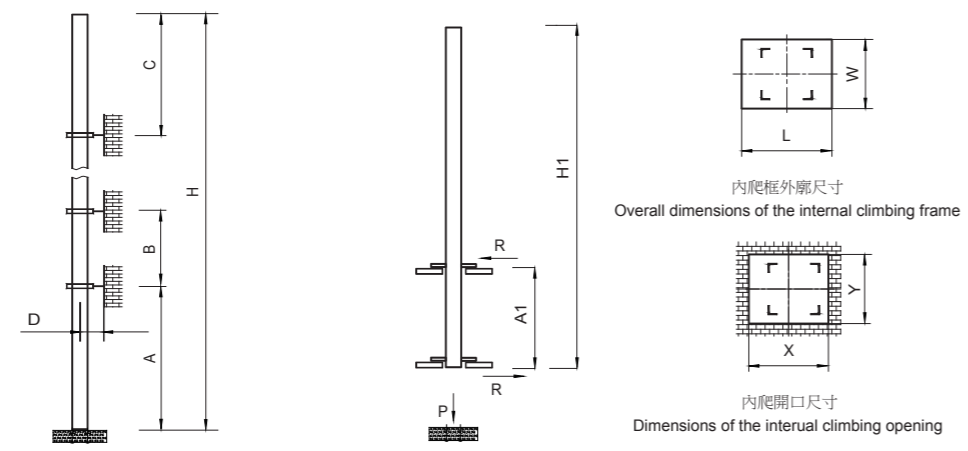
  

<b>F1</b>	109t	115t	
	91t		

<b>F4</b>	118t	132t	
	150t		

● 工作狀態支反力 In service reaction    ■ 非工作狀態支反力 Out of service reaction  
 ⊕ 整機自由高度重量 (不含平衡重及壓重重量) Total weight of free standing crane (excludes counter weight & ballast.)



塔身節 Mast	A (m)	B (m)	C (m)	D (m)	H (m)
H205B	63	42	59	>4.0	400 >400*
L69B1	49	39	47.7	>3.6	350 >350*

塔身節 Mast	H1 (m)	A1 (m)	P (t)	R (t)	X (m)	Y (m)	L (m)	W (m)
H205B	73.5	18	154	38	3.28	2.4	3.5	3.02
L69B1	47.5	12	147	30	2.58	2.17	2.78	3.29

附著道數 Number of tie collars = (H-A-C)/B+1  
 超過100m高度，需降低載荷，請與公司聯繫。  
 Load should be reduced when the height exceeds 100m. Please contact Yongmao for details.

Topless STT293

# STT293

## 18/16/12t

### 主要性能參數 Specifications

機構 Mechanism						電動機 Motor kW		
	m/min	t	m/min	t				
18t	75LFV45★		0-38 0-46 0-76	9.0 6.0 3.0	0-19 0-23 0-38	18.0 12.0 6.0	680m	75
	75LFV45DB1		0-40 0-96 0-160	9.0 3.0 1.0	0-20 0-48 0-80	18.0 6.0 2.0	1030m >1030m*	75
16t	75LFV40		0-47 0-57 0-95	8.0 6.0 3.0	0-24 0-28 0-47	16.0 12.0 6.0	550m >550m*	75
12t	55LFV30★		0-44 0-53 0-88	6.0 4.0 1.7	0-22 0-27 0-44	12.0 8.0 3.5	630m	55
	75LFV30		0-60 0-80 0-120	6.0 3.0 1.5	0-30 0-40 0-60	12.0 6.0 3.0	1030m >1030m*	75
	7.5DFV08		0-69 m/min				7.5	
	RTC290★		0-0.8 rpm				2x145 N·m	
	YMD100		0-0.8 rpm				2x10.5	
	RT		12.5-25.0 m/min				4x2.6/5.2	

供電容量 Power supply	kVA
380V (±10%) 50 Hz	75LFV45, 75LFV40, 75LFV30, 75LFV45DB1 : 115 55LFV30 : 85

\* 與製造商聯繫 Contact us, please.  
 ★ 標準配置 Standard configuration.

本技術參數不受法律約束，技術資訊請詳見相應說明書。  
 Specifications and data are not legally binding. For any technical information, please refer to corresponding instructions.

0 0  
2 2  
7 8

Topless STT293  
 Topless STT293